

# TE KĀHUI RAU:



MAY

# He Karakia...

Tina te kawa kei runga, tina te kawa kei raro.  
Tāia te kawa, tukua te kawa, turuturu te kawa, mania te kawa.  
Pūwai iti i runga te kawa, puwai iti i raro te kawa, paheke te kawa.  
Rau-uwhiuwhi te kawa, Rau-matomato te kawa, Rau-manomano te kawa.  
Tuputupu nunui te kawa, tuputupu roroa te kawa, tuputupu Rau-tāpatu te kawa.  
Ka hau te kawa, ka tapu te kawa, ka ea te kawa,  
Heke mai te kawa ora, he ora e.... Te Kawa!

**Tai:** the sea or lands  
horizon where heaven  
and earth meet

**Ao:** the world around,  
below  
and above us

**Te Taiao** is the  
natural world that  
contains and  
surrounds us.

# Ngā mihi nui...

We extend our gratitude to all participants and stakeholders who contributed to this kaupapa and resultant strategy. Your insights and commitment are vital in restoring balance and ensuring the future well-being of Te Taiao and our hapū.

# About the project

## Project Overview

Te Kāhui Rau represents a transformative movement, symbolising our commitment to effecting positive change for future generations through the restoration of Te Taiao. Positioned as the inaugural phase of the overarching vision, He Kāhui Mano, Te Kāhui Rau endeavours to encapsulate ambitious aspirations while tackling systemic obstacles impeding the realisation of our objectives. It consolidates the efforts and aspirations of ngā uri to manifest healing and abundance.

Te Kāhui Rau- the research and regeneration project set out to empower ngā uri o Ngāti Tāwhirikura to define our relationship with Te Taiao through whakapapa, mātauranga Māori, indigenous practices, and the sciences. The insights gained throughout the project, were then to be distilled into a Taiao Strategy that would articulate our cultural narrative, and provide pathways that shape alterations in land management practices, identify value chains, and create new markets that enhance the well-being and vitality of whanau and whenua.

We were one of three Pilot Programmes that received funding from *Our Land Water* as part of their **Revitalise te Taiao: A mātauranga led, science informed te Taiao inspired research programme:** <https://revitalisetetaiao.co.nz/> We also received co-funding from TOI Foundation.

# Key Goals and Objectives

- Building a movement that **inspires our whanau, hapū and community...**
- The principles of **Te Tiriti o Waitangi** are foundational in guiding land stewards and agribusinesses in moving from *te taiao in thinking* to *te taiao in action*.
- **Restoration of Te Taiao:** The project focuses on revitalising the environment which has been traditionally affected by colonisation and resource exploitation.
- **Empowerment Through Knowledge:** The initiative draws on whakapapa to reclaim and redefine the cultural relationship with the environment, positioning indigenous practices at the forefront.
- **Developing a Taiao Strategy:** The insights gained will be used to formulate a comprehensive strategy that articulates the community's cultural narrative and outlines pathways toward improved land management practices, value chains, and market creation that enhance well-being.

# Research Questions:

1. If descendants of a hapū begins with Te Taiao focus they will identify land use and business activities that restore the mana and mauri of Te Taiao.
2. If land is returned to mana whenua and applying a customary framework then land use and management change can occur more meaningfully
3. If land is returned to mana whenua then healing the whenua and the people can occur.
4. If the hapū connect with their whenua, then consumers will connect with their narrative and land use options that revitalise Te Taiao

# Who did we work with?

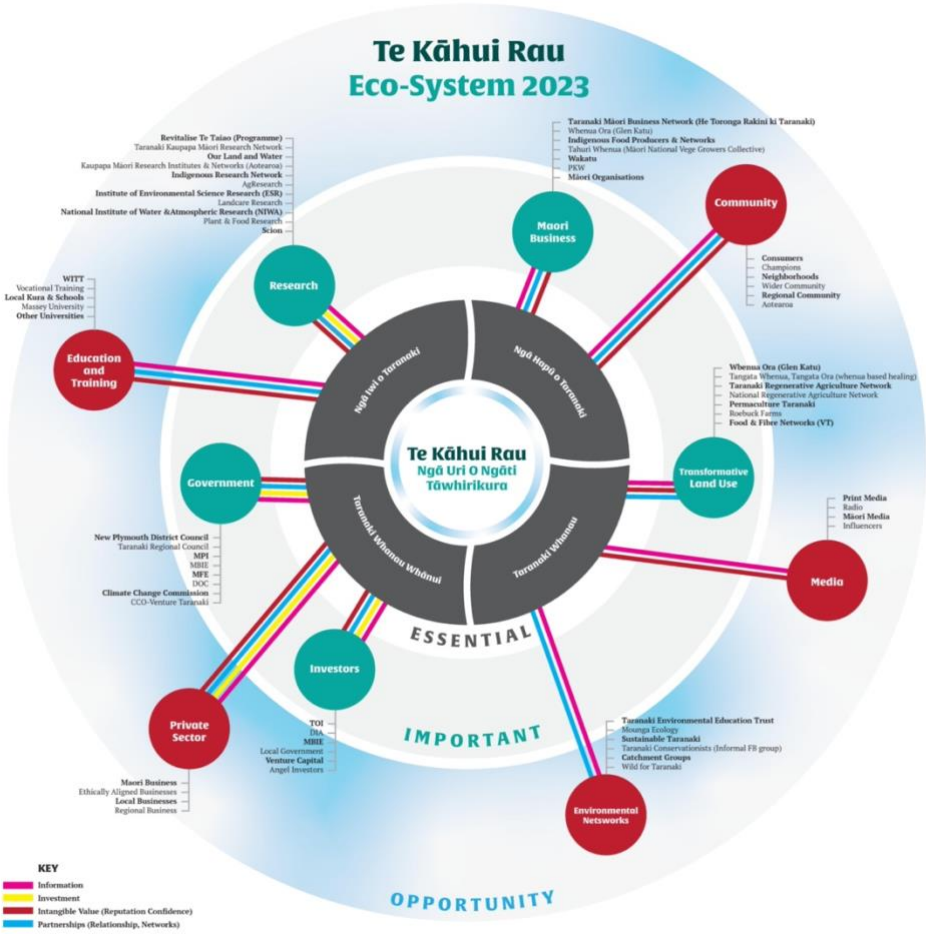
## Right Holder and Stakeholder Engagement

### Te Kāhui Rau Eco System

We engaged with over 20 whanau who whakapapa to Ngāti Tāwhirikura hapū who provided korero tuku iho, personal stories and insights into shaping our hapū voice, vision and aspirations in our Taiao Strategy.

Wānanga Series: The project included community-led wānanga (gathering) sessions attended by over 300 participants. These wānanga focused on discussing aspirations, challenges, and building a collective knowledge base around Te Taiao.

We developed our eco-system map to find ‘commonalities’ and shared aspirations for a Taiao-positive future. This eco-system allowed us to focus on key groups and relationships that are future-focussed.



# Key Insights:

Te Kāhui Rau utilised 11 insights that informed our actions and provided the ingredients for identifying land use, management and market opportunities that care for place by connecting people to place and growing a deeper understanding and respectful, reciprocal relationship with our place:

1. Treaty of Waitangi lens is foundational to project design.
2. Te Taiao as a basis for change.
3. Respecting all forms of knowledge.
4. Encapsulation of tikanga/values.
5. People and community-led change.
6. Sense of place, belonging, and well-being are critical.
7. Emphasis on collaboration and participation (kotahitanga), addressing power imbalances.
8. Strong leadership and management principles (mana rangatira/mana whakahaere).
9. Changing economic models to suit Māori aspirations.
10. Interconnected solutions are necessary for holistic impact.
11. Need for diverse inputs, including resources like funding and spatial data.



# Project Milestones & Achievements

In summary we believe we have:

- Developed a recognisable brand to capture our movement, website and social
- Developed our Engagement Plan, identifying key relationships and partnerships within our ecosystem to look for opportunities to share resources and collaborate. In addition to keeping stakeholders abreast on projects
- Run community wānanga to build awareness and support kaupapa māori project development and research
- Whenua Schedule (enables planning and rationale/priority for return to hapū) and land management plan, collection of baseline data.
- Developed a Taiao Strategy 2024-29- articulation of cultural narrative, vision & strategic actions, and implementation plan
- Refined our Landscape of Opportunities- currently working on numerous investment pathways to activate:
  - ⇒ Tāpiri Taranaki- Resource Recovery Solutions (in progress)
  - ⇒ Demonstration of Regenerative Pilot (In progress, October 2024)
  - ⇒ Development of a Food Systems Strategy for Taranaki (In progress, May 2024)
  - ⇒ Development of an Indigenous Business Eco-System (In progress, October 2024)
  - ⇒ Development of an Indigenous Founder Programme and Circular Business Incubator (In progress, September 2024)

⇒ Development of an Indigenous Circular Economy Conference (October, 2024) <https://www.rautapatu.nz/circulareconomyconference>

# Systemic issues

- Power imbalance and legitimise continued exclusion (Central and Local Govt), eg: procurement-co-design
- Reimagining and articulating new success metrics and levers for change. This is an area that we are working on to align with our values developing He Kāhui Mano: Circular Cultural Economy
- New Investment into Māori enterprise and venture capital
- Unblock barriers in key industries

# Opportunities:

- Agency Co-funding of kaupapa
- Fund kaupapa longer term
- Build local bricolage and look for opportunities to collaborate and share infrastructure

# Future Directions

We are activating development across several key areas:

- Implementing the Taiiao Strategy across all Pathways to provide a holistic solutions to these interconnected challenges facing whanau, hapū and hāpori.
- Expanding partnerships to enhance resource sharing and collaborative eco-development projects.
- Continuing to foster community engagement and education, ensuring the legacy of Te Kāhui Rau influences future generations.

# Te Kāhui Rau Taiao Strategy 2024-29



TE KĀHUI RAU: TE TAI AO STRATEGY

The Te Kāhui Rau: Taiao Strategy 2024-2029 is an intergenerational plan to design the future we want as ngā uri o Ngāti Tāwhirikura.

[www.tekahuirau.nz](http://www.tekahuirau.nz)

The Te Kāhui Rau Taiao Strategy is an intergenerational plan designed by ngā uri o Ngāti Tāwhirikura as an expression of our motuhake and compassion for one another.

Our strategy articulates the aspirations of whanau to ensure a resilient future through responsible stewardship of the land, prioritising collaboration with stakeholders to address the complex issues affecting our community.

## Vision: A thriving and resilient Te Taiao

Emphasising the interconnectedness of well-being, environment, and cultural integrity.

## Values: Grounded in kaitiakitanga, mana motuhake, rangatiratanga and Tūturutanga

# Our Actions: The BIG 5 Pathways:

1. **Taiao:** Focus on natural climate solutions and regenerative practices, aiming for biodiversity and resource recovery.
2. **Kai Resilience:** Stimulating sustainable food systems supporting Māori sovereignty over food production.
3. **Partnerships:** Collaborating with various stakeholders for shared goals and resources.
4. **Circular Economy:** Implementing principles to minimize waste and enhance sustainability.
5. **Indigenous Wisdom and Innovation:** Leveraging Māori knowledge to drive innovation and environmental stewardship.

# Monitoring framework to assess progress toward our goals

## Impact Measurement

Success will be evaluated through several indicators:

- Whakatōtika: Alignment in our work/priorities.
- Whakawewete: Analysing the impact of policies on our ability to deliver outcomes for Te Taiao.
- Whakaatu: Demonstrating movement in the right direction.
- Whakaaweawe: Ensuring our initiatives are impactful and achieving desired outcomes.

# Lessons Learned

The collaborative process revealed the necessity of a strengths-based approach which prioritises relationships and understanding within the community.

Key lessons include:

- The importance of ‘co-design’ methodologies to foster trust and collaborative spirit.
- Visibility of mana whenua within the community is vital for fostering connections.
- Cultural identity serves not just as heritage but as an economic narrative, positioning our whanau, hapū and hāpori in new markets that celebrate and value quality, story and connection.
- Holistic approaches are essential in addressing interconnected systemic issues such as climate change and socio-economic disparities.